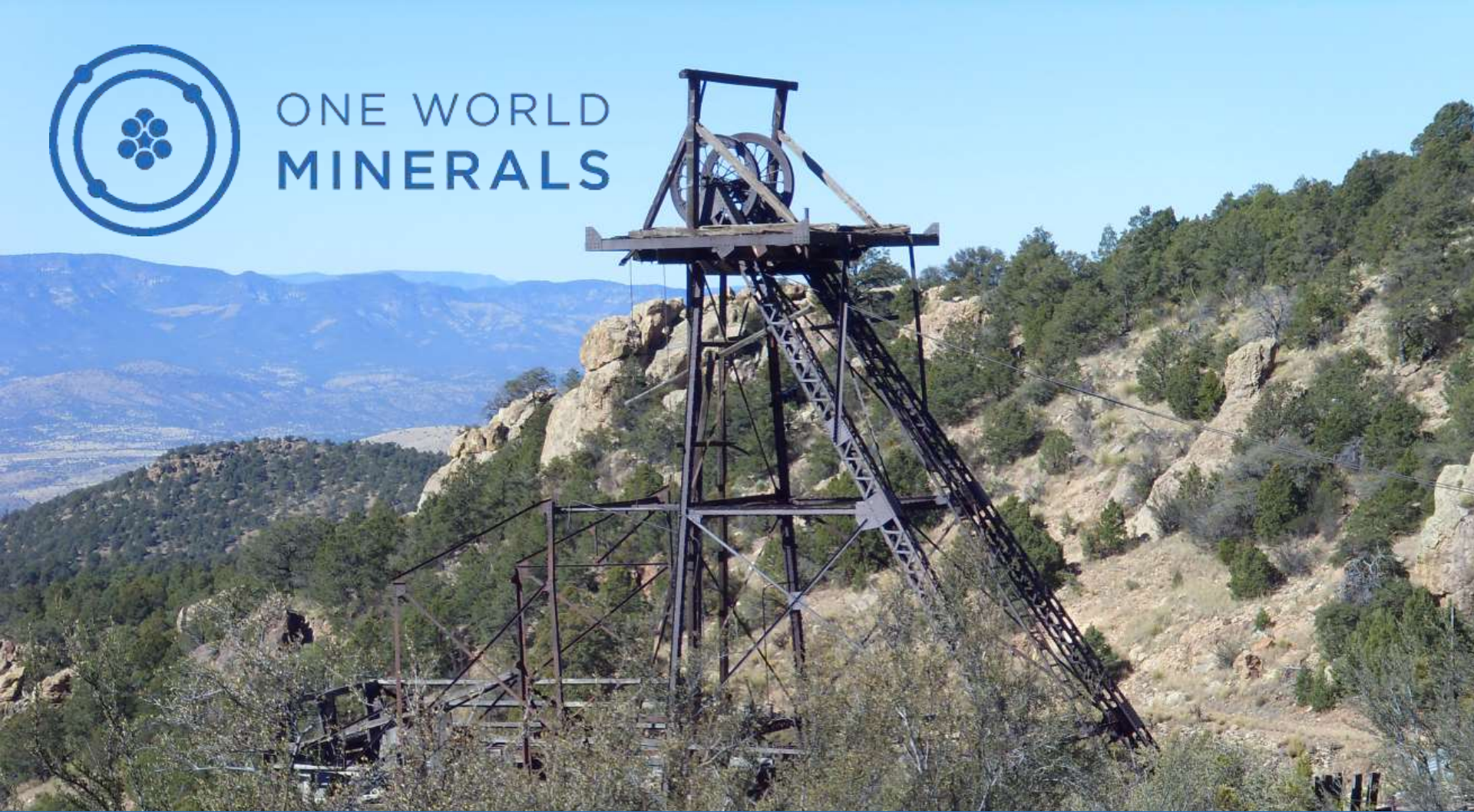




ONE WORLD
MINERALS



Mogollon High-Grade Silver-Gold Project

April 2017



Information in this presentation may be forward looking. Forward looking information is subject to known and unknown risks, uncertainties and other factors, including potentially inaccurate assumptions, which may cause the actual results, performance or achievements to be materially different from the future results, performance or achievements expected or implied by the forward looking information which speaks only as of the date of this presentation. No invitation to purchase securities is being made. For more detailed information about the Company, please go to our website at www.oneworldminerals.ca



Mogollon is a high-grade silver-gold property with a production history spanning 45 years:

- 1875 - James Cooney, a sergeant in the 8th cavalry, discovers veins near Copper Creek while on patrol
- 1879 - Cooney mine ships first ore
- 1894 - Little Fanney & Last Chance Mines begin operation
- 1937 - Consolidated Mine begins operation
- 1942 - Mines closed by War Production Board Order L 208
- 1976 - Sage Associates begins modern exploration era



- Silver - 17 million ounces
- Gold - 305,000 ounces
- 2.0 million short tons
- Ore grade:
 - Gold: 0.186 oz/ton
 - Silver: 9.32 oz/ton

Cooney - 1879 - 1911

- Production: +/-100,000 t of silver-gold-copper ore with a silver equivalent of ~2.7 m oz

Fanney - ~1894 - 1942

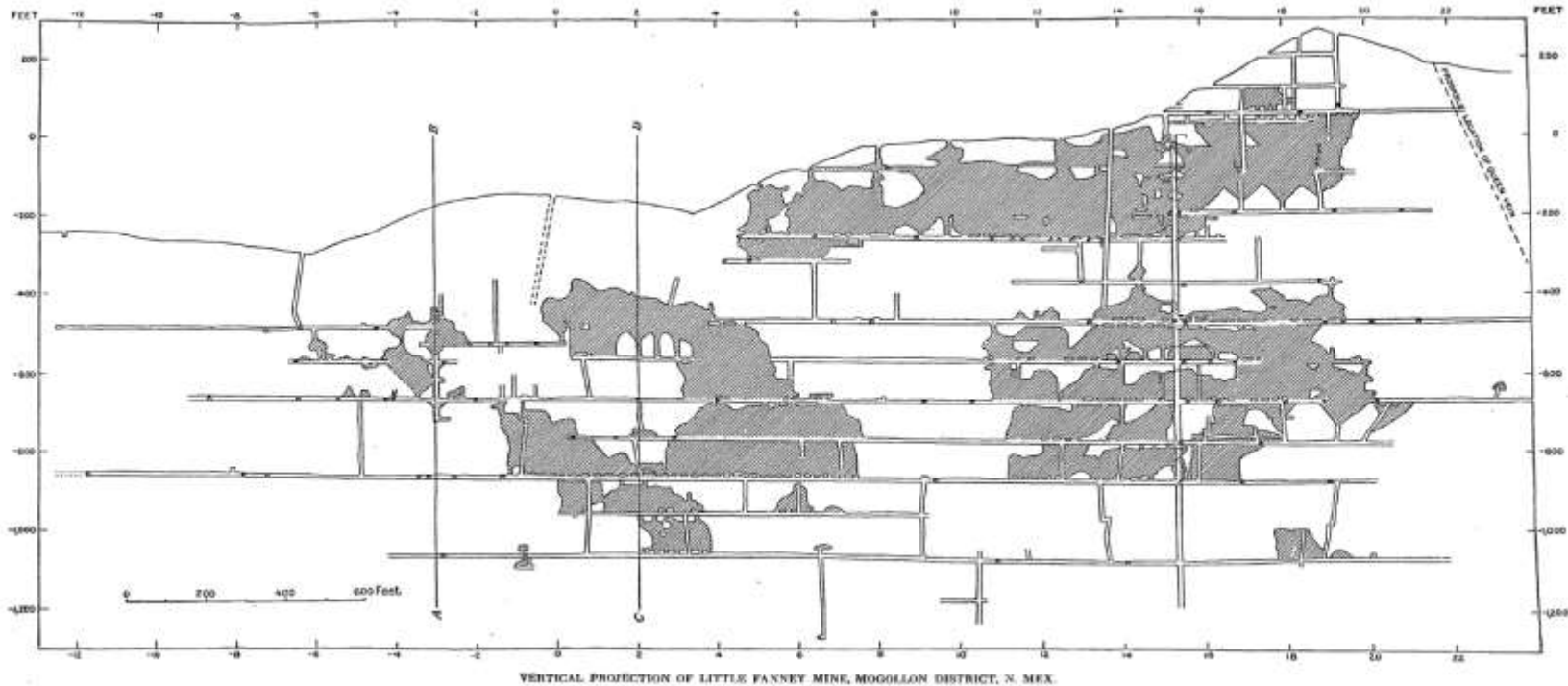
- 1M tons of silver-gold ore

Last Chance - 1894 ~1927

- 1M tons of silver-gold ore

Consolidated - 1937 -1942

- 300,000 tons of silver-gold ore
- Ore was processed in cyanide mills using Pachuca tanks
- Mill recovery averaged ~ 90% for silver & gold

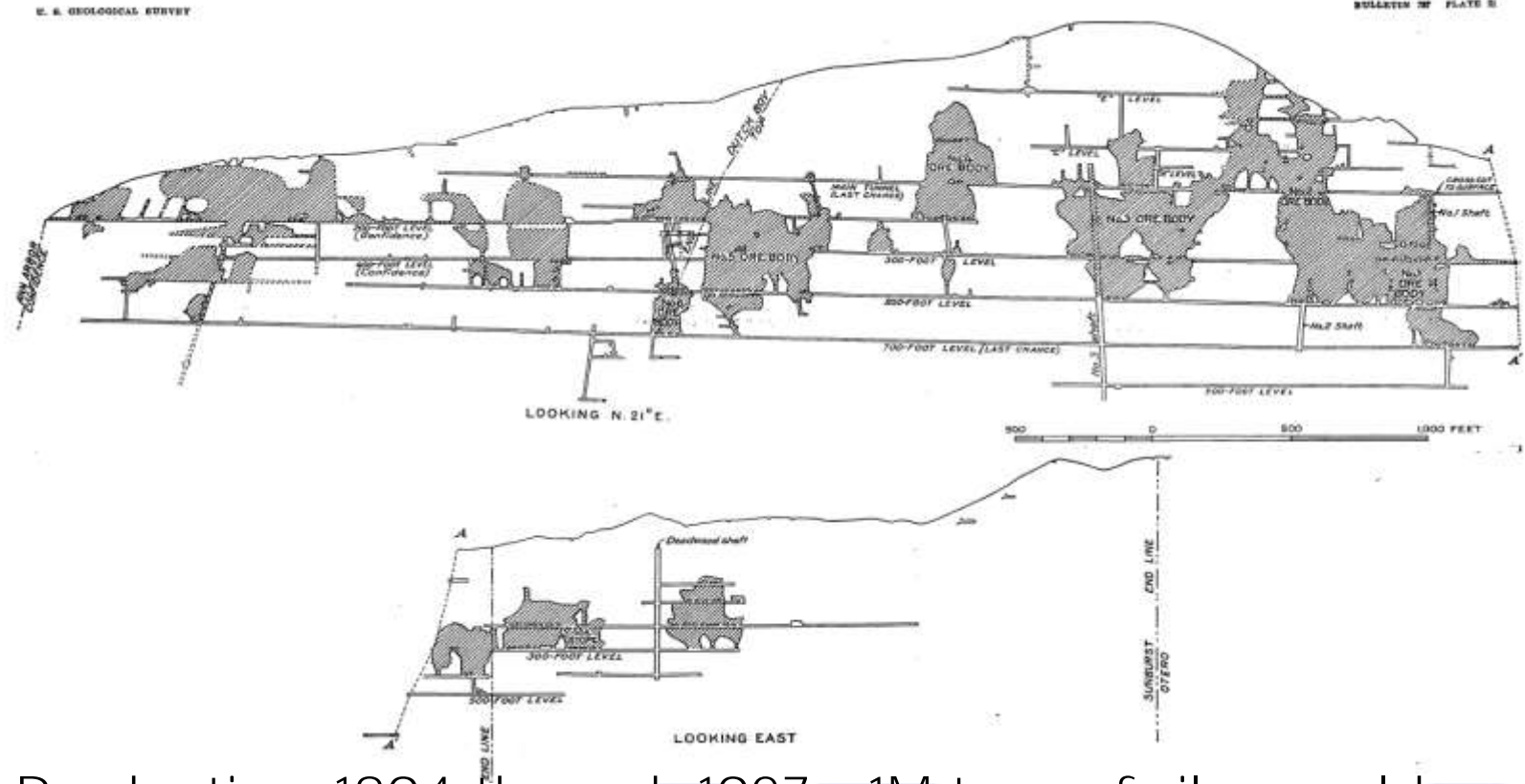


VERTICAL PROJECTION OF LITTLE FANNEY MINE, MOGOLLON DISTRICT, N. MEX.

- Production: 1893 through 1942 ~ 1M tons of silver-gold ore
- Ore bodies up to 20 feet (6m) wide
- Ore was processed in a 250 tpd cyanide plant
- Gold & silver recovery averaged 90%

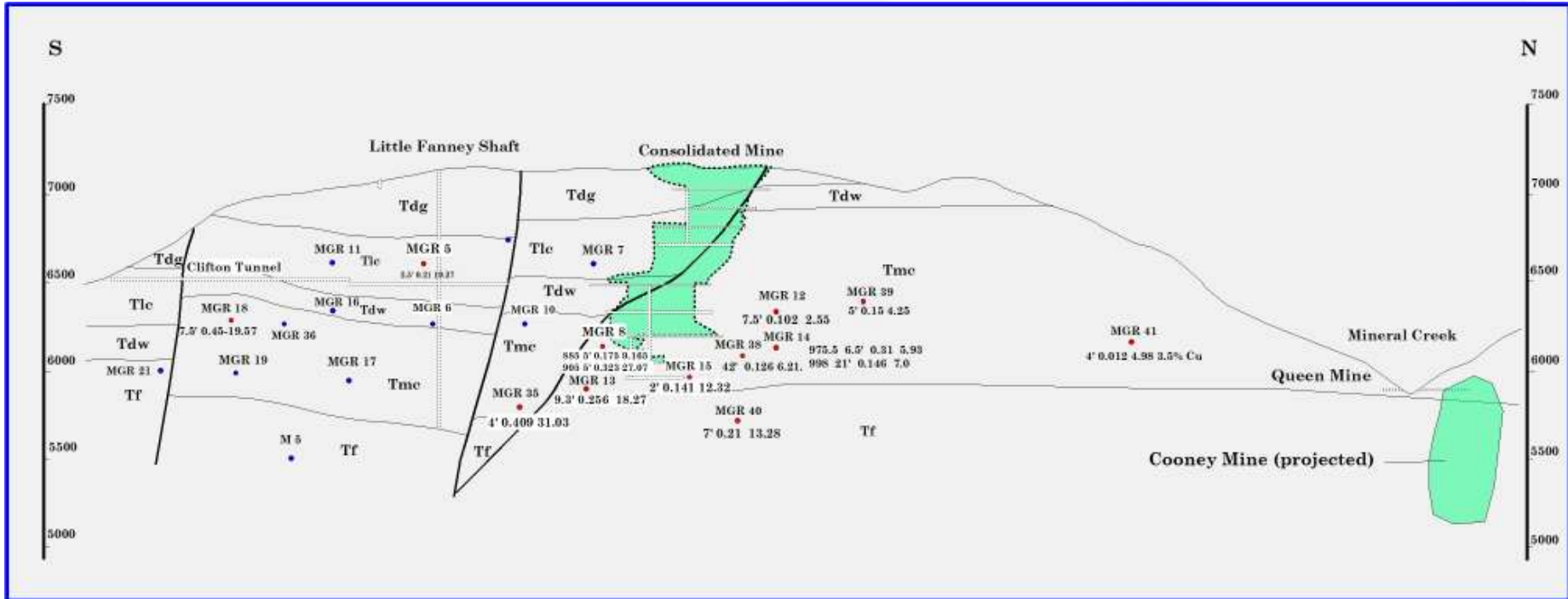


LAST CHANCE MINE



- Production: 1894 through 1927 ~ 1M tons of silver-gold ore
- Ore bodies averaged 8 - 12 feet (2.4 - 3.7 m) wide
- Processing in 200 tpd cyanide plant
- Silver & gold recovery averaged ~90%

CONSOLIDATED ZONE

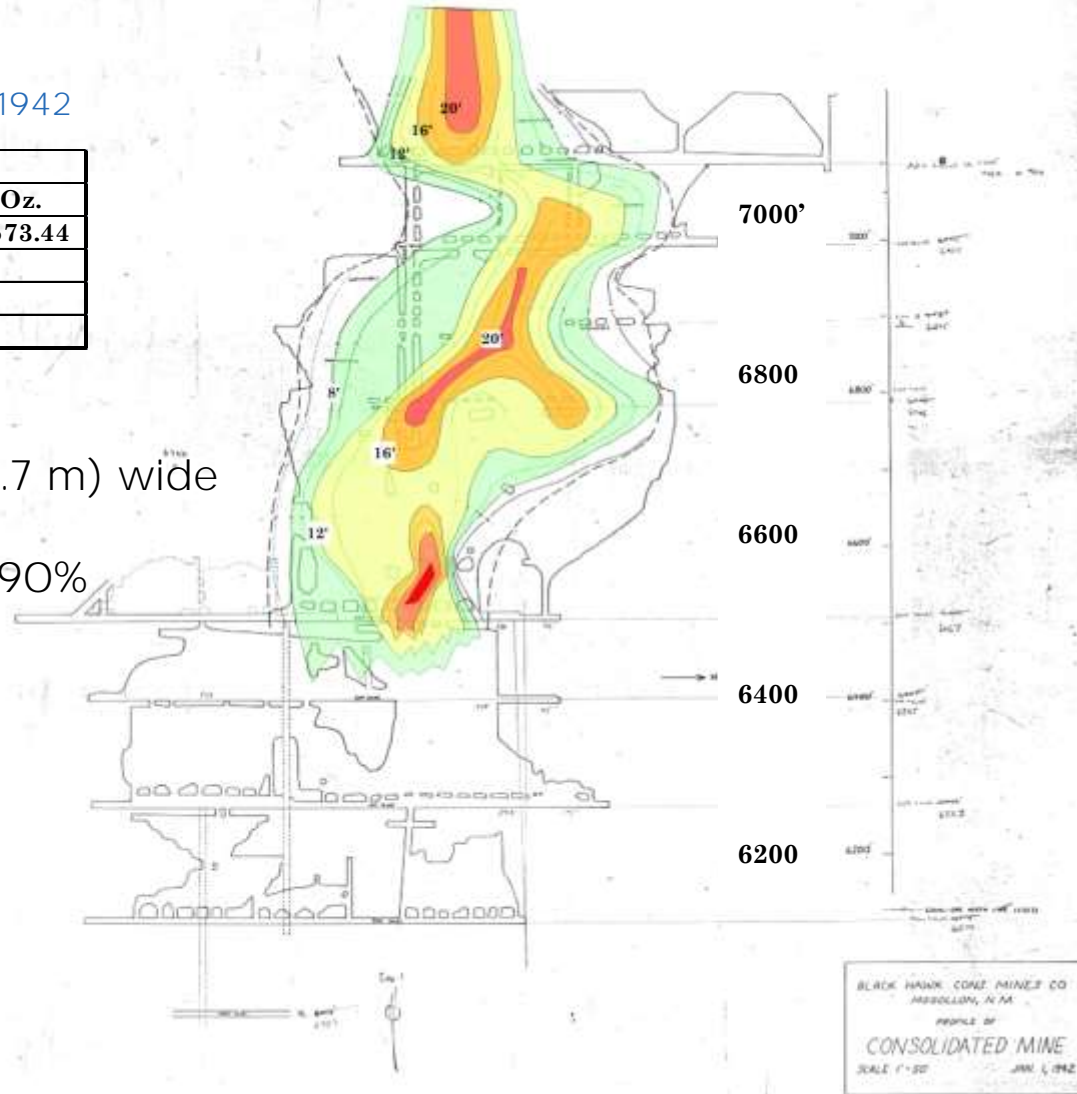


CONSOLIDATED MINE Vein Thickness (feet)

Consolidated Mine Production 1937 to June, 1942

	Au	Au	Ag	Ag
Short Tons	Troy Oz/t	Troy Oz.	Troy Oz/t	Troy Oz.
292,993	0.135265	39631.8	7.698395	2,255,573.44
Metric Tonnes	g/t		g/t	
265,799	4.638		263.945	

- Production: 1937-1942
- Ore bodies averaged > 12 feet (3.7 m) wide
- Processed in 200 tpd plant
- Gold & silver recovery averaged 90%



CONSOLIDATED ZONE: DRILL INTERCEPTS

Drill Hole	Width ft	Au (oz/t)	Ag (oz/t)	Width m	Au (g/t)	Ag (g/t)	Cu (%)
MGR-5	2.5	0.21	19.27	0.76	7.20	660.69	
MGR-8	5	0.175	9.165	1.52	6.00	314.23	
MGR-8	5	0.323	27.07	1.52	11.07	928.11	
MGR-12	7.5	0.102	2.55	2.29	3.50	87.43	
MGR-13	9.3	0.256	18.27	2.83	8.78	626.40	
MGR-14	6.5	0.31	5.93	1.98	10.63	203.31	
MGR-15	2	0.141	12.32	0.61	4.83	422.40	
MGR-35	4	0.409	31.03	1.22	14.02	1063.89	
M-39	5	0.15	4.25	1.52	5.14	145.71	
M-40	7	0.21	13.28	2.13	7.20	455.31	
M-41	4	0.012	4.98	1.22	0.41	170.74	3.5

1975 – 1976

- Sage Associates identifies Mogollon as important exploration target

1976 – 1980

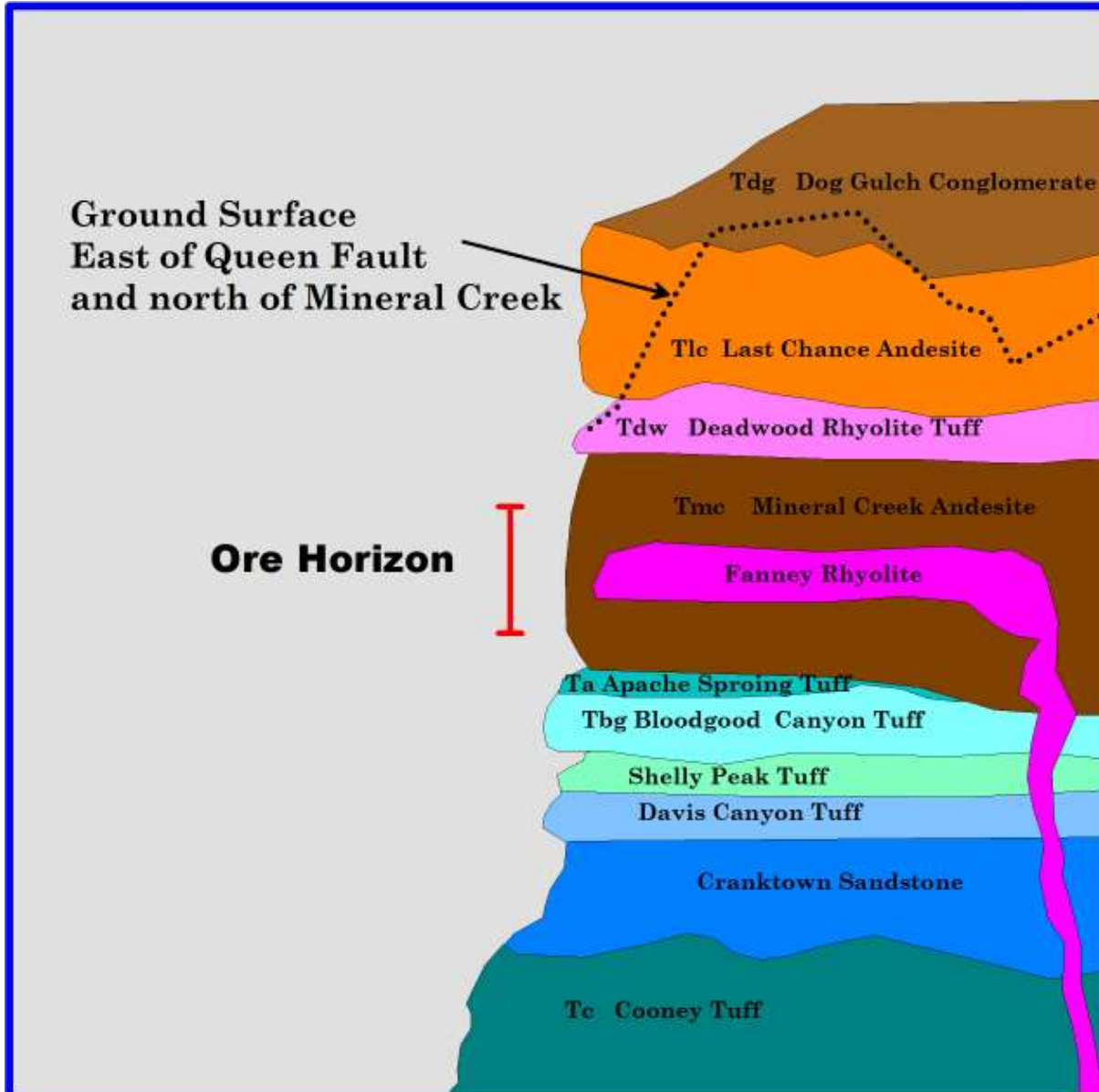
- Stake land east of Queen vein
- Lease Last Chance, Fanney, and other patented claim blocks
- Geological surface mapping – ~50 sq km
- Geochemical sampling – 160 samples along vein targets run for Au, Ag, Pb, Zn, Cu, & As
- Mine mapping of accessible workings

1980- 2011

- Drilling: 54 holes, 14,190 meters



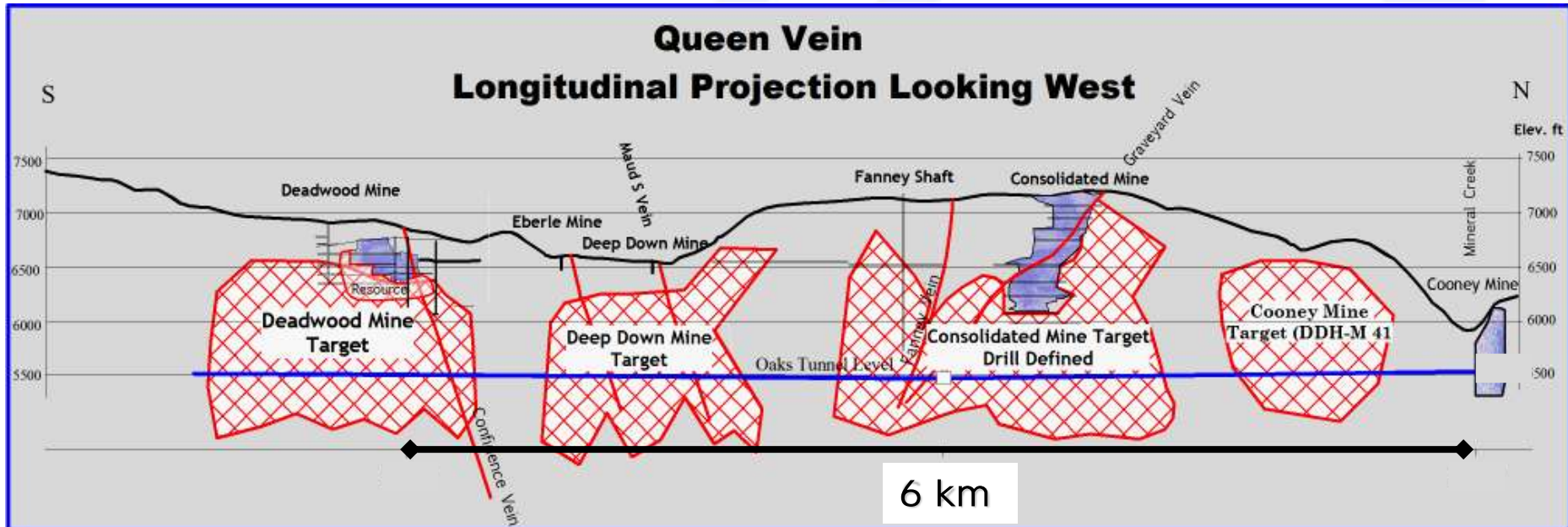
ORE DEPOSITS AT MOGOLLON Controlled by the Fanney Rhyolite



The ore horizon is 100 - 400 meters below ground surface along most of the Queen vein and along the northwest faults east of the Queen vein - as demonstrated by drilling.

Potential exceeds several million tons of high-grade ore in non-outcropping veins or below old mines on the Queen vein.

QUEEN VEIN: DEFINED TARGET ZONES



- **Consolidated** – Defined by 10 drill holes. Mineralized vein width to 15 m
- **Last Chance East** – Defined by 4 drill holes, geological mapping, surface geochemistry
- **Fanney East** – Defined by geological mapping, surface geochemistry, 1 drill hole
- **Deep Down/Eberle** – Defined by past mining and geological mapping
- **Deadwood** – Defined by geological mapping, historic mining, 4 drill holes
- **Cooney** – Defined by geological mapping, surface geochemistry, 1 drill hole
- **Queen North** – Defined by geological mapping, surface geochemistry, & prospect pits & shafts

PROJECT OBJECTIVES

- Drill out the Consolidated and adjacent zones and conduct a feasibility study
- Drill the Deadwood, Deep Down, Fanney East and Last Chance East targets
- Conduct geological mapping and surface geochemical programs along the North Queen Target